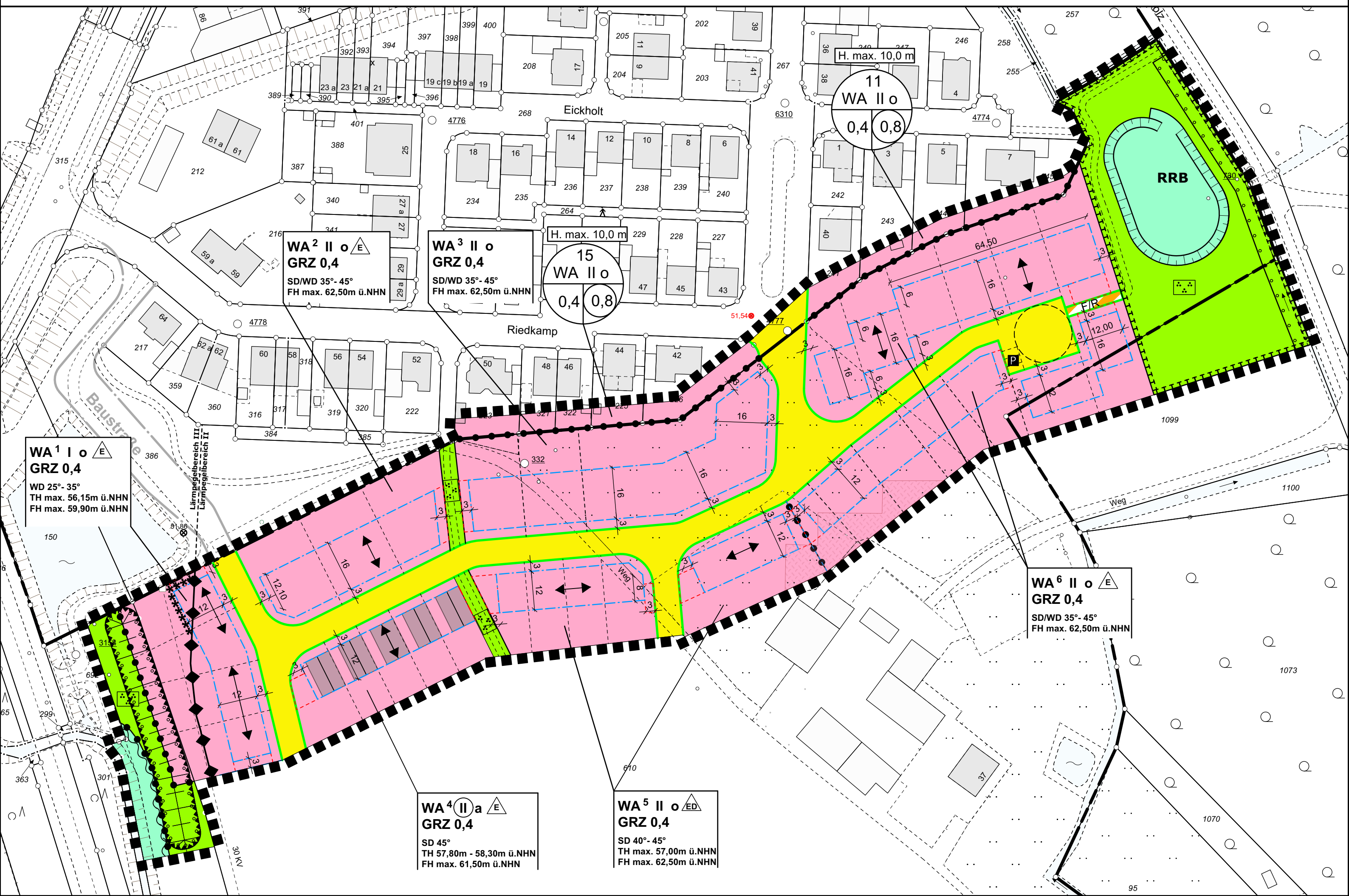


# Auszug aus dem Bebauungsplan "Eickholter Busch"



**WA<sup>1</sup> I o E**  
**GRZ 0,4**  
 WD 25°- 35°  
 TH max. 56,15m ü.NHN  
 FH max. 59,90m ü.NHN

**WA<sup>2</sup> II o E**  
**GRZ 0,4**  
 SD/WD 35°- 45°  
 FH max. 62,50m ü.NHN

**WA<sup>3</sup> II o**  
**GRZ 0,4**  
 SD/WD 35°- 45°  
 FH max. 62,50m ü.NHN

**15**  
**WA II o**  
 0,4 0,8  
 H. max. 10,0 m

**11**  
**WA II o**  
 0,4 0,8  
 H. max. 10,0 m

**WA<sup>6</sup> II o E**  
**GRZ 0,4**  
 SD/WD 35°- 45°  
 FH max. 62,50m ü.NHN

**WA<sup>4</sup> II a E**  
**GRZ 0,4**  
 SD 45°  
 TH 57,80m - 58,30m ü.NHN  
 FH max. 61,50m ü.NHN

**WA<sup>5</sup> II o ED**  
**GRZ 0,4**  
 SD 40°- 45°  
 TH max. 57,00m ü.NHN  
 FH max. 62,50m ü.NHN